

Sonosite PX

Flexible Hybrid



Reliable imaging, **real results.**



TEE at the point of care

Sonosite's T8-3 offers advanced image clarity and real-time answers. Optimized with cardiac resuscitation and lung exam types. Scan depth 4-18 cm.



Sonosite Voice Assist

An assistant at your command. With voice assist perform simple, everyday commands such as image save, color on and reduce depth, while being hands-free, untethered to the system and closer to the patient.

Performance you can **rely on**

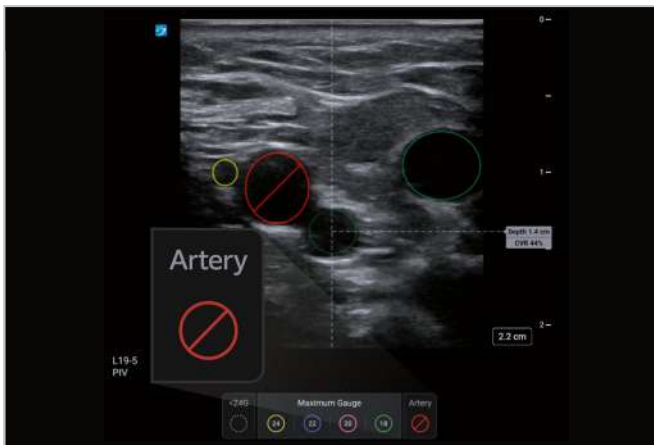
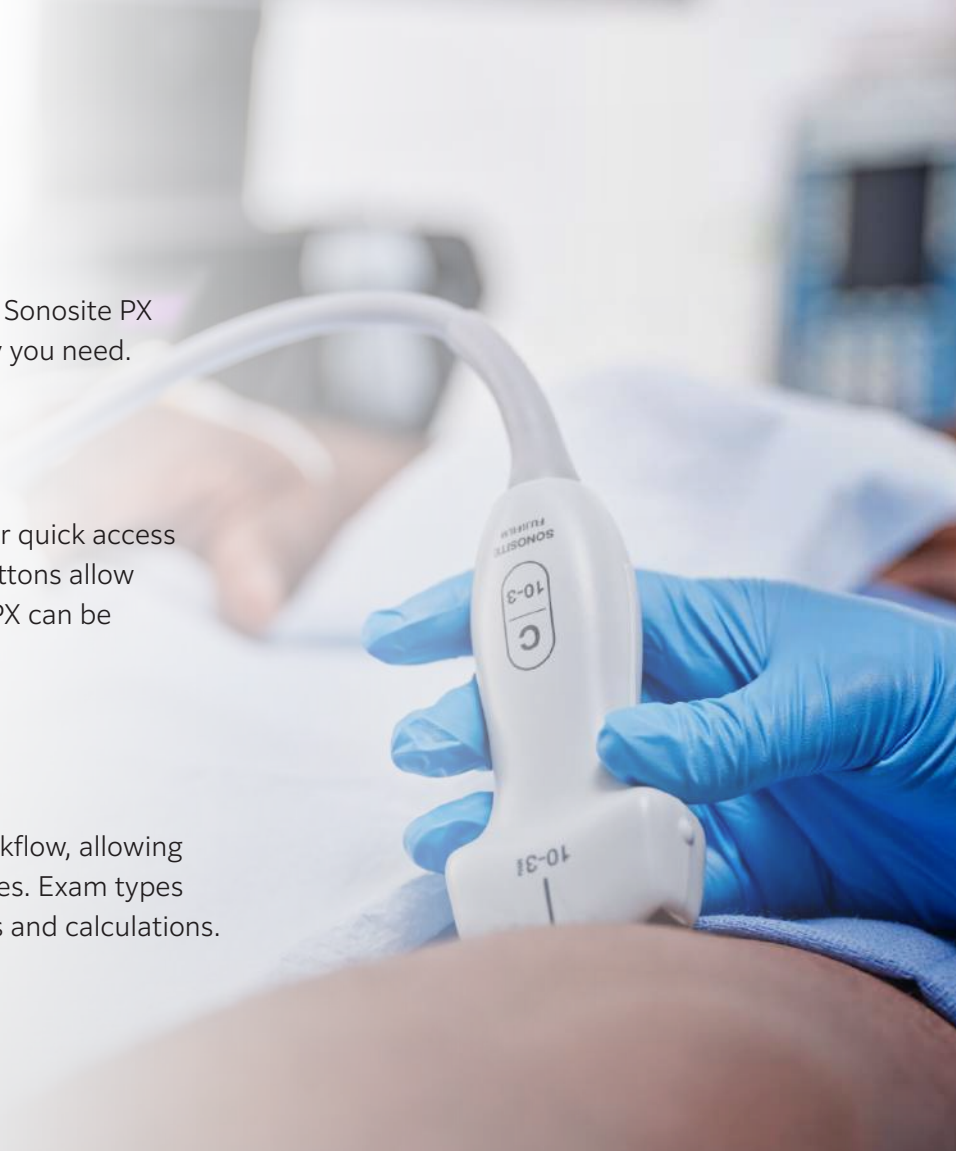
From routine exams to complex procedures, Sonosite PX provides the performance and dependability you need.

Touch and **physical controls**

Intuitive touch panel and physical buttons for quick access to the most-used controls. Unique raised buttons allow you to make adjustments via feel. Sonosite PX can be operated with gloves and a sterile drape.

Workflow **efficiency features**

The streamlined user interface improves workflow, allowing you to find controls quickly with fewer touches. Exam types are optimized with most needed annotations and calculations.



Sonosite **PIV Assist**

AI-powered vessel identification that delivers real-time vein vs. artery differentiation, color coded vessels matched to catheter size, and live catheter-to-vessel ratio (CVR) visualization.



Rest assured with **data security**

Sonosite PX includes robust security features to keep patient information safe and networks secure. The system meets FIPS199, FIPS200, and NIST 800-53.

Built to withstand.



C5-1

Scan Depth: 4.7–30 cm

Applications: Abdomen, Lung, Gynecology, Nerve, Musculoskeletal, Early Obstetrics, Obstetrics, Procedural Abdomen, Spine, VExUS



C10-3

Scan Depth: 3–18 cm

Applications: Abdomen, Gynecology, Lung, Nerve, Musculoskeletal, Early Obstetrics, Obstetrics, Spine, VExUS



IC10-3

Scan Depth: 3–15 cm

Applications: Gynecology, Early Obstetrics, Obstetrics, Prostate



L12-3

Scan Depth: 1.5–9 cm

Applications: Arterial, Breast, Carotid, Lung, Musculoskeletal, Nerve, Ophthalmic, PIV, Superficial, Venous



L13-6

Scan Depth: 1–6 cm

Applications: Musculoskeletal, PIV, Superficial, Venous



L15-4

Scan Depth: 1.5–6 cm

Applications: Arterial, Breast, Carotid, Musculoskeletal, Nerve, Superficial, Venous



L19-5

Scan Depth: 1–6 cm

Applications: Arterial, Lung, Musculoskeletal, Nerve, Ophthalmic, PIV, Superficial, Vascular Access, Venous



P5-1

Scan Depth: 5–35 cm

Applications: Abdomen, Pediatric Abdomen, Cardiac, Pediatric Cardiac, Focused Cardiac, Lung, Obstetrics, Orbital, Transcranial Doppler (TCD), VExUS



P11-3

Scan Depth: 2–15 cm

Applications: Neonatal and Pediatric Cardiac, Neonatal and Pediatric Lung, Neonatal and Pediatric Abdominal and Neonatal Cephalic

Our transducers



operate safely after **3 ft drop test**.



endure **50,000 major flex and twist** cycles.



scan continuously for **12 hours** at 40 degrees celsius and 95% humidity.

Our systems

can help clinicians rapidly diagnose and treat trauma victims in even the most extreme environments.

DROPPED



BAKED



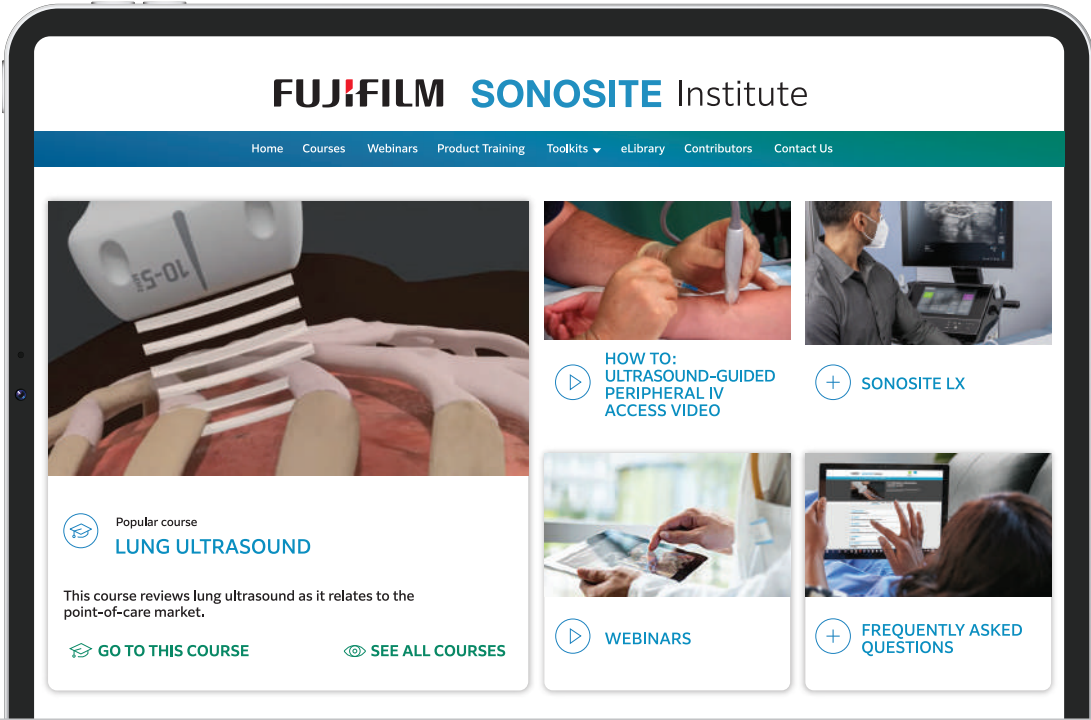
FROZEN



SHOCKED



operate safely after **1,000 miles** of military cargo transport conditions



Learn More

As part of our commitment to providing accessible education, Sonosite PX includes an expansive library of on-system training, with 150+ scan-along tutorials including anesthesiology, pain management, procedures, and more.

Explore education at sonosite.com/education

FUJIFILM
Value from Innovation

SONOSITE

FUJIFILM Sonosite, Inc.

Worldwide Headquarters
21919 30th Drive SE, Bothell, WA 98021-3904
Tel: +1 (425) 951 1200 or +1 (877) 657 8050
Fax: +1 (425) 951 6800 sonosite.com

FUJIFILM Sonosite BV

European Headquarters
Joop Geesinkweg 140, 1114 AB
Amsterdam, Netherlands
Tel: +31 20 462 0000

Sonosite Worldwide Offices

FUJIFILM Sonosite Australasia Pty Ltd: Australia	1300 663 516	FUJIFILM Sonosite SARL-France	+33 182 880 702
FUJIFILM Sonosite Australasia Pty Ltd: New Zealand	0800 888 204	FUJIFILM Asia Pacific Pte. Ltd.	+65 6383 9933
FUJIFILM Sonosite Canada Inc.	+1 888 554 5502	FUJIFILM (China) Investment Co., Ltd	+86 21 5010 6000
FUJIFILM Sonosite GmbH-Germany.	+49 69 80 88 40 30	FUJIFILM Medical Co., Ltd.-Japan	+81 3 0418 7190
FUJIFILM Sonosite Iberica SL-Spain.	+34 91 123 84 51	FUJIFILM Middle East (FZE)	+971 4 887 8722
FUJIFILM Sonosite India Pvt Ltd	+91 120-4414100		
FUJIFILM Sonosite Ltd-United Kingdom	+44 1462 341 151		

SONOSITE and the SONOSITE logo are registered and unregistered trademarks of FUJIFILM Sonosite, Inc. in various jurisdictions. FUJIFILM is a registered trademark of FUJIFILM Corporation in various jurisdictions. All other trademarks are the property of their respective owners.

Copyright © 2026 FUJIFILM Sonosite, Inc. All rights reserved. Subject to change.

MKT03426 Rev M 01/2026